

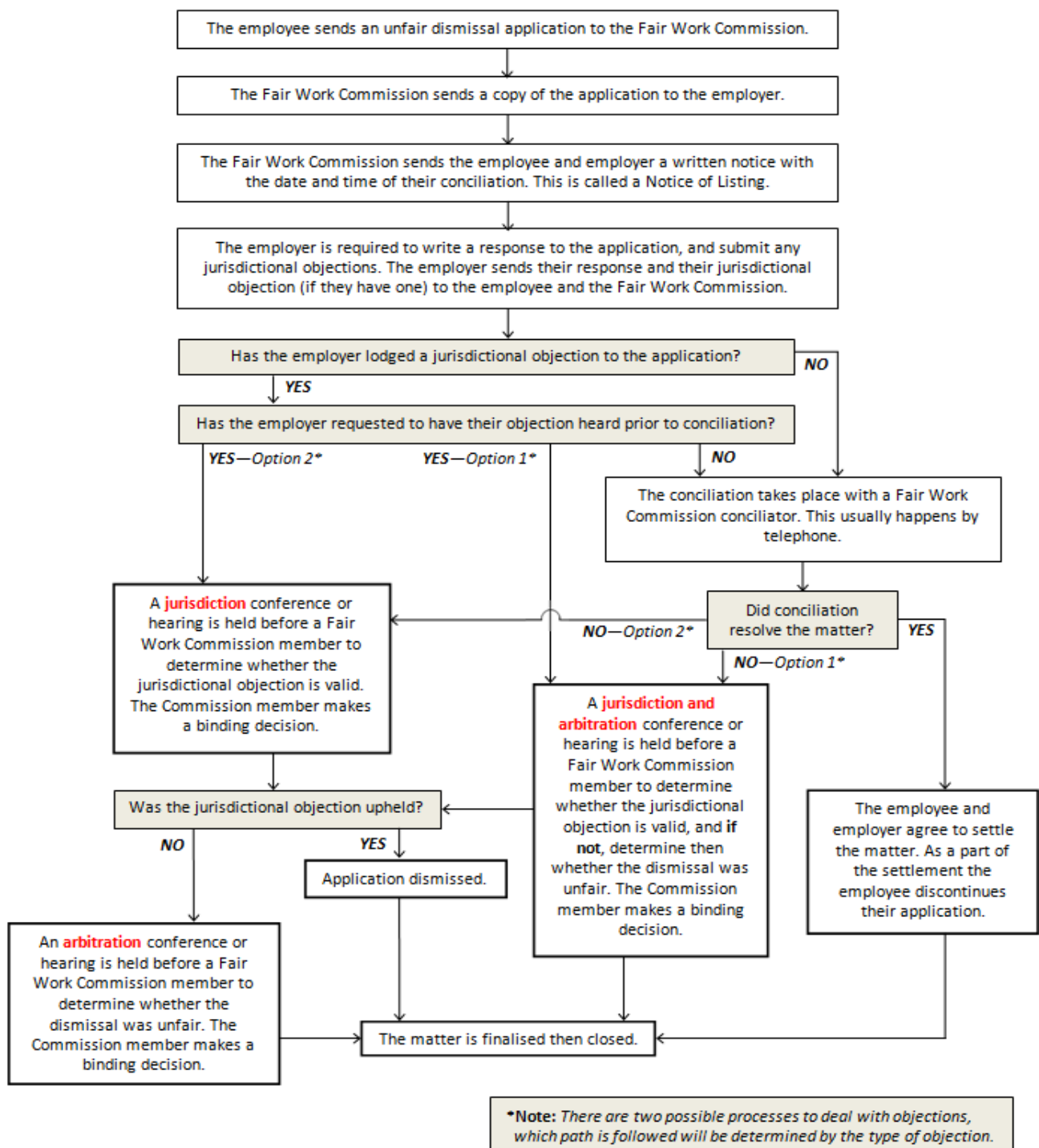


Unfair dismissal – Guide 2

Flowchart of the process

This guide outlines what generally happens during the Fair Work Commission’s unfair dismissal process.

The process



Where to get legal help

To make sure the Commission stays independent, Commission staff and Members cannot provide legal advice.

We understand that legal advice can reduce complexity and confusion, improve access to justice and minimise costs. The following services may be able to help.

The Commission's [Workplace Advice Service](#) provides access to free legal advice to eligible employees and small business employers seeking employment law advice on unfair dismissal, general protections and workplace bullying.

Another option may be for you to find a community legal centre in your area by searching the [Community Legal Centres Australia](#) website.

Members of registered organisations such as unions and business associations may be able to access legal advice by contacting their organisations directly.

The law institute or law society in your state or territory may be able to refer you to a private solicitor.

Further information

For eligibility information, refer to the [Unfair dismissal eligibility quiz](#) on the Commission's website.

You can also refer to the full set of unfair dismissal guides available on the [Unfair dismissal](#) page on our website.

1. Overview of the unfair dismissal laws
2. Flowchart of the process
3. Making an application
4. Responding to an application
5. Objecting to an application
6. Preparing for conciliation
7. Preparing for a conference or hearing
8. Frequently asked questions
9. Glossary of common terms

The [Unfair dismissals benchbook](#) can also assist parties lodging or responding to unfair dismissal applications.

If you require further information or help, please refer to the [Contact us](#) page on the Commission's website.